



METRO BEEKEEPERS

Metro Beekeepers Association Annual Report 2021



www.metrobeekeepers.net

2021 MBA Summary



- **MBA Purpose**
- **Programs in Member meetings**
- **Youth Scholarships**
- **Beginning Beekeeper Class**
- **Web/Social Media**
- **Financial Report**
- **Membership**
- **Looking to the Future**



MBA Purpose



- **Share the importance of bees to growing fruits, vegetables, flowers, & to the environment**
- **Share methods of beekeeping & honey production**
- **Promote beekeeping in the Fort Worth area**
- **Attract and train future beekeepers in the science & craft of beekeeping**
- **Visitors & new Members are Welcome!**
- **Monthly meetings, with Speakers, Q&A, snacks, socializing**
- **Beekeeping Classes**
- **Youth Scholarship Program (Free Bees!)**
- **Visit an apiary (honeybee yard)**
- **Members & Donations support our programs**
- **We're a non-profit 501c3**



You Could Be a Beekeeper!

Programs in 2021 Meetings



4

- **Interesting Speakers**
- **This Month In-the-Hive, Plant of the Month**
- **Youth Scholarship presentations**

Mon	Speaker	Topic	Venue
Jan	Mark Przybyla	The Science of Testing Honey	Online
Feb	Eddie Collins	Backyard Splits	Online
Mar	Morgan	Hives for Heroes	Online
Apr	Brian Buchrucker	Urban Backyard Beekeeping	Online
May	Russ Killingsworth	Helping Bees Deal with Varroa Mites	Online
Jun	Clint Walker	Walker Honey Farms	Online
Jul	Jan Clark	Plants for Honey Bees	Online
Aug	Ryan Giesecke	What's A Beehive Worth?	Online
Sep	John Wright	The Dynamic Apiary	Online
Oct	Blake Shook	Important Things to Know in Beekeeping	Online
Nov	Mark Przybyla	Lessons Learned in the First Year of Beekeeping	Online
Dec		Holiday social, pot luck	In-person

- **MBA continued community service with online meetings & classes, & in-person help at the hive**

Youth Scholarships



- **Youth Leader: Katrina Semones**
- **6 youth completed scholarships**
 - **Mary J, LaurelAnna, Caroline, Mary M, Teah, Liam**
 - **Bee hive woodenware (10 frame deep & medium)**
 - **Clothing (suit, gloves)**
 - **Tools (hive tool, brush, smoker)**
 - **5 frame Nuc (nucleus of bees)**
 - **Class with book**
 - **MBA Membership for their family**
 - **Youth Leader & Mentor as guides**
- **March 21-22: Built hive boxes. Painted boxes at home.**
- **April: Hive painting competition video released**
- **May 29: Picked up Nucs & installed in the hives**
- **Students provided photos & verbal reports**



**Funded by MBA Members as part of our charter
to promote beekeeping, and by ...**



www.texasbeesupply.com

HOME

SHOP

STORE LOCATIONS AND HOURS AND POLICIES

TEXAS BEE SUPPLY MONTHLY MAGAZINE

BEEKEEPERS BLOG

HIVE AND NUC PURCHASE INFORMATION

VIDEO BLOG

(800) 356-4229



FREE SHIPPING

on most orders over \$50!

Thank you to TEXAS BEE SUPPLY for donating suits, gloves, woodenware, & tools for Youth Scholarships!

2021 MBA Youth Scholarship Student Hives



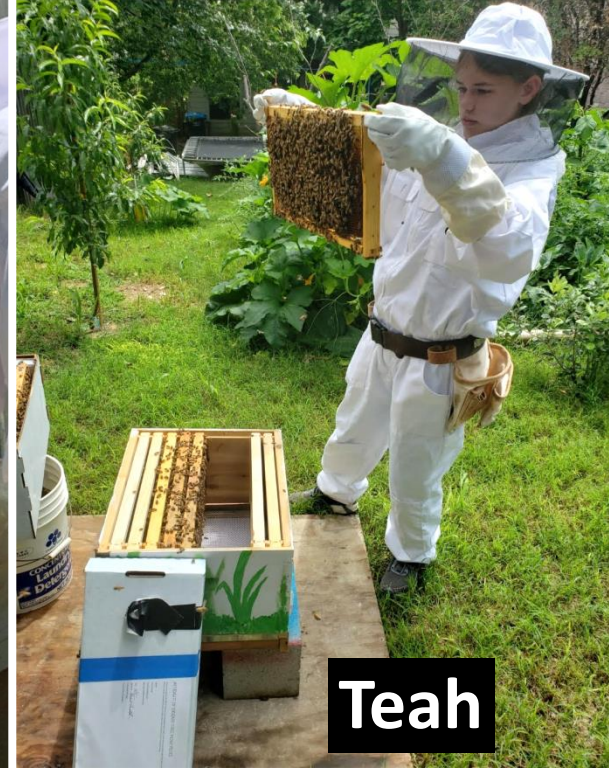


Laurel

Mary J



Caroline



Teah



Mary M

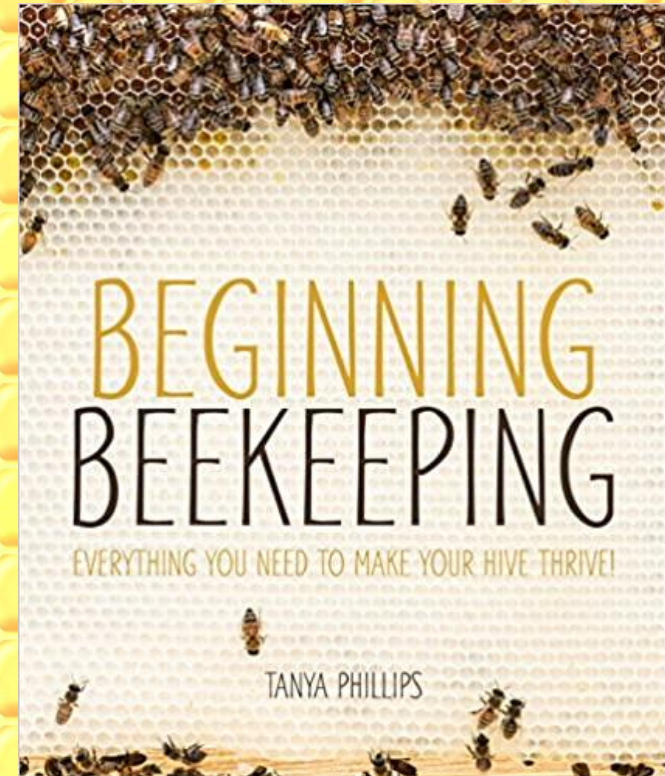


Liam

Beginner Beekeeping Class of 2021



- **26 students, including 6 youth scholarships**
 - **11 sessions. Online Jan-Nov**
 - **Taught by Gretchen Killingsworth**
 - 1. Introductions, Overview, Bee Info**
 - 2. Hive Types & Location**
 - 3. Tools & Protective Clothing**
 - 4. Installing Nuc, Swarm, or Package**
 - 5. Inspecting & Maintaining**
 - 6. Pests & Diseases**
 - 7. Swarms, Capturing & Prevention**
 - 8. Troubleshooting/Problem Solving**
 - 9. Harvesting**
 - 10. Preparing for Winter**
 - 11. Seasonal Beekeeping, Resources**
- Book: Beginning Beekeeping, by Tanya Phillips**



Web/Social Media



- **Robert Morrow, Webmaster**
- **MBA Home Page**
 - **Join/Renew, Youth Scholarships, Class, Officers, Bee Removal, Extractor, FAQ**
 - **<https://metrobeekeepers.net/>**
- **Facebook page**
 - **MBA Announcements**
 - **<https://www.facebook.com/metrobeekeepers>**
- **Facebook Group, 1800 members**
 - **Members share ideas, information, etc.**
 - **<https://www.facebook.com/groups/62625793131>**

Financial Report



METRO BEEKEEPERS

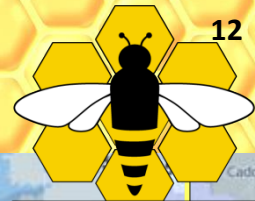
- **MBA uses Cash Method of accounting. Transactions are booked in the month money is received or paid.**
- **1 Scholarships**
 - **Amount shown includes costs of bees (nucs)**
 - **Texas Bee Supply donated equipment, suits, & tools (not included in totals shown)**
- **Report submitted by Gretchen Killingsworth, 2021 MBA Treasurer (19 Feb 2022)**

	Amount
Beginning Balance	\$ 13,856
Ending Balance	\$ 13,465
Income for year	\$ 2,805
Expense for year	\$ 3,196
Income - Expense	-\$391

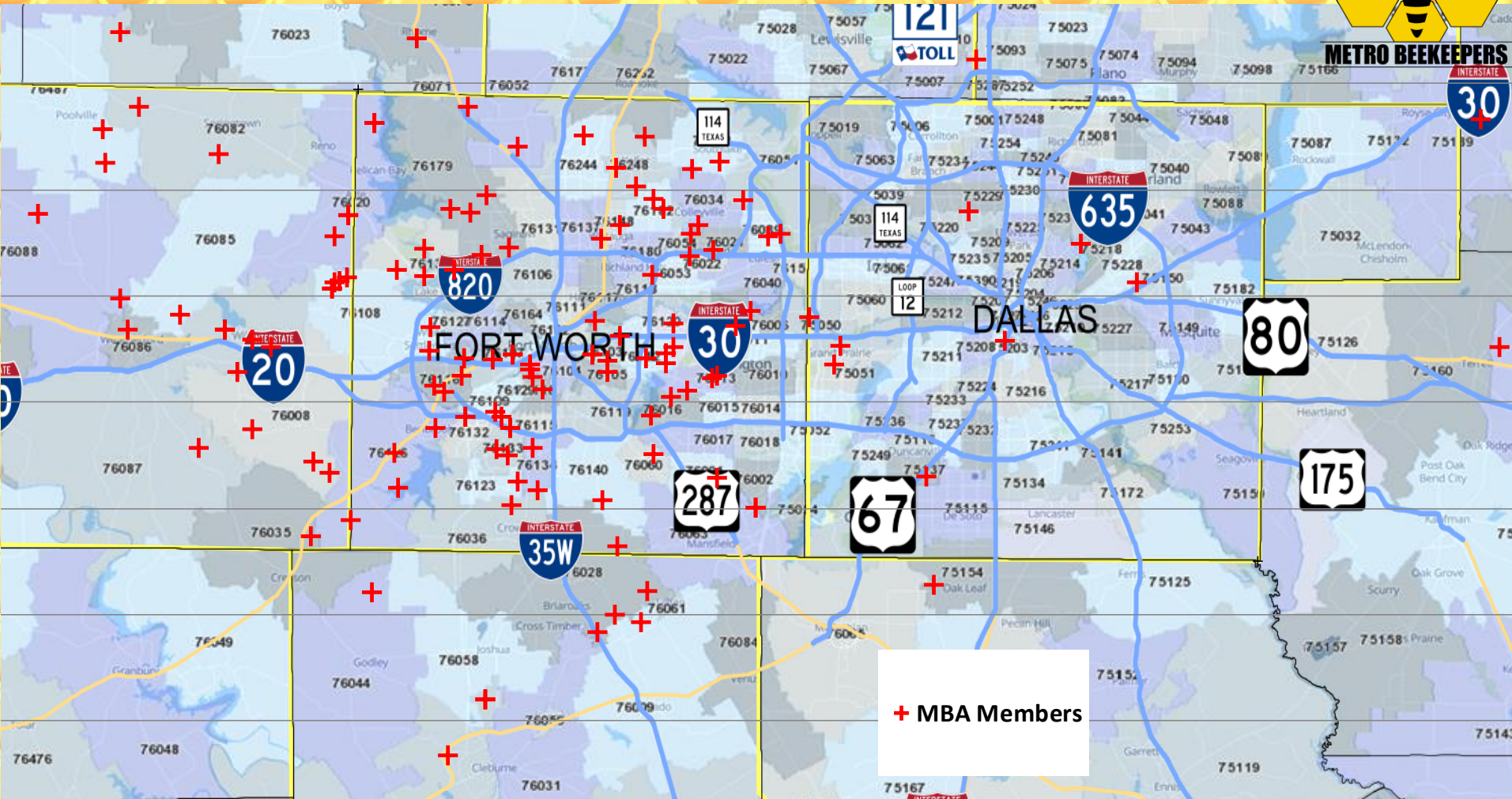
Income by Category	Amount
Class	\$ 1,500
Member dues	\$ 1,305
Total Income	\$ 2,805

Expense by Category	Amount
Attorney	\$ 100
Venue	\$ 1,030
Scholarships	\$ 1,145
Speaker	\$ -
Class	\$ -
Insurance	\$ 545
Catering	\$ -
Website	\$ 99
Membership	\$ -
PayPal	\$ 90
Bank	\$ -
TBA Texas Beeks	\$ 50
Post Office Box	\$ 137
Total Expenses	\$ 3,196

Membership



12



+ MBA Members

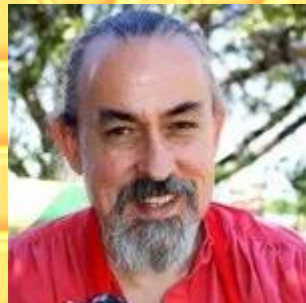
- **183 MBA Member households cover wide area**
- **Members can opt in to share email & zip code, to help coordinate visits to bee yards, share equipment, etc**

2021 Board of Directors

Thanks to the volunteers!



Russ Killingsworth
President & Membership



Richard Threlkeld
Vice President



Brent Husted
Secretary



Gretchen Killingsworth
Treasurer & Class Teacher



Katrina Semones
Youth Coordinator



Mark Przybyla
Programs



Robert Morrow
Webmaster / Social Media



Ryan Giesecke
Past President

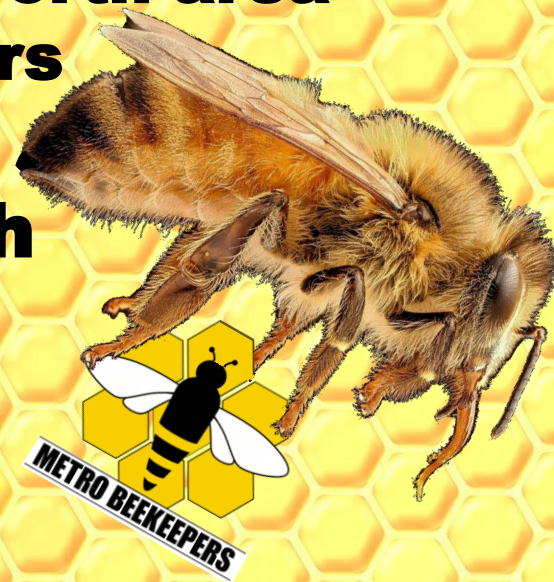
2021 Business Meeting



- **Business meeting held online, 9 Nov 2021**
 - **All Members invited**
 - **Summarized MBA Mission & Director Tasks**
 - **Listed candidates for 2022 Board of Directors & opened for nominations**
- **Voting was done online, 11 thru 14 Nov 2021**
 - **2022 Board of Directors elected**
 - **Vote reviewed by Board of Directors: 15 Nov 2021**
 - **Results emailed to all Members on 28 Nov 2021**

The Future

- **MBA continues dedication to our 4 missions**
 - **Share the importance of bees**
 - **Share methods of beekeeping & honey production**
 - **Promote beekeeping in the Fort Worth area**
 - **Attract and train future beekeepers**
- **2022 Plans**
 - **Already awarded 5 new Youth Scholarships**
 - **Planning monthly programs**
 - **Beginner classes**
 - **Web / Social Media presence**
- **We'd love to hear your suggestions**



**MBA Relies on Member's Support
Thank You!**