

Metro Beekeepers Association Annual Report 2025



METROBEEKEEPERS.NET

2025 MBA Summary



- **MBA Purpose & Activities**
- **Programs in Monthly Member Meetings**
- **Youth Scholarships**
- **Beekeeping Class**
- **Field Trips**
- **Membership**
- **Web/Social Media**
- **Financial Report**
- **Board of Directors**
- **2025 Business Mtg**
- **MBA History**
- **The Future**



MBA Purpose & Activities



- **Share the importance of bees to growing fruits, vegetables, flowers, & to the environment**
- **Share methods of beekeeping & honey production**
- **Promote beekeeping in the Fort Worth area**
- **Attract and train future beekeepers**
- **Monthly meetings, Speakers, Q&A, sharing, snacks**
– **Visitors & new Members are Welcome!**
- **Website & Social Media**
- **Beekeeping Classes**
- **Youth Scholarships**
- **Field trips to an apiary (honey bee yard)**
- **We're a non-profit 501c3 (EIN 36-4916556)**
- **Board of Directors are volunteers**
- **Members & Donations support our programs**



You Could Be a Beekeeper!

Programs in 2025 Meetings

- **Program Director: Barbara Boardman**
- **Interesting Speakers**
- **This Month In-the-Hive, Plant of the Month**
- **Youth Scholarship presentations**

Mon	Speaker	Topic
Jan	Brent Husted	How to Render Wax. Summary of FAQs Resource.
Feb	Cummings, Brian	Honey Bee Nutrition and Winter Feeding
Mar	Slater, Garrett	Honey Bee extension program & Texas Master Beekeeper Program
Apr	Brown, Dennis	How to Perform a Thorough & Efficient Inspection
May	Townsend, Kim	Live bee rescues, removals, relocations
Jun	Martinez, Omar	Understanding Queen Rearing Production: Principles and Practices for Beekeepers
Jul	Boerst, Michelle	Protecting Bees from Varroa Mites
Aug	Leggett, Terry	Natural Beekeeping
Sep	Giesecke, Ryan	Re-queening
Oct	Felty, Louis	Winterizing bees
Nov	Staley, Jake	A year in Jake's Hives
Dec	None	dinner, slides, games, prizes

Youth Scholarships, 2025



5

- **Youth Leader: Gary Dilling**
- **3 youth scholarships: Bennett, Makenna, Evan**
 - **Bee hive woodenware (10 frame deep & medium)**
 - **Clothing (suit, gloves)**
 - **Tools (hive tool, brush, smoker)**
 - **5 frame Nuc (nucleus of bees)**
 - **Class with book**
 - **MBA Membership for their family**
 - **Youth Leader & Mentor as guides**
- **Thank you to The Bee Supply for discounts to youth!**
- **March: Built hive boxes. Painted boxes.**
- **April: Hive painting competition video released**
- **May: Picked up Nucs & installed in the hives**
- **Students provided great reports in MBA meetings**



**Supported by MBA Members as part of our
charter to promote beekeeping**

2025 MBA Youth Scholarship Students



METROBEEKEEPERS.NET

MBA Beekeeping Classes



- **Everything you need to know to succeed**
- **2nd Mondays, January thru October, 5:30p**
 - **Fort Worth Botanic Garden & webcast online**
- **Charts, notes, & video are available to download**
 - **All materials from previous year provided up front**
 - **You can go through everything in your own time**
 - **Join any time through the year & catch up**
- **4.7 out of 5 stars**
- **Field trips**
 - **Several bee yards**
 - **Class gets priority**
- **For MBA Members**
 - **\$125 for 1 person**
 - **\$95 for 2nd person**
- **Past students can audit free, or full participation \$60**
- **Refer a student, get free 1 yr membership**



MBA Field Trips, 2025



15 March, Gretchen



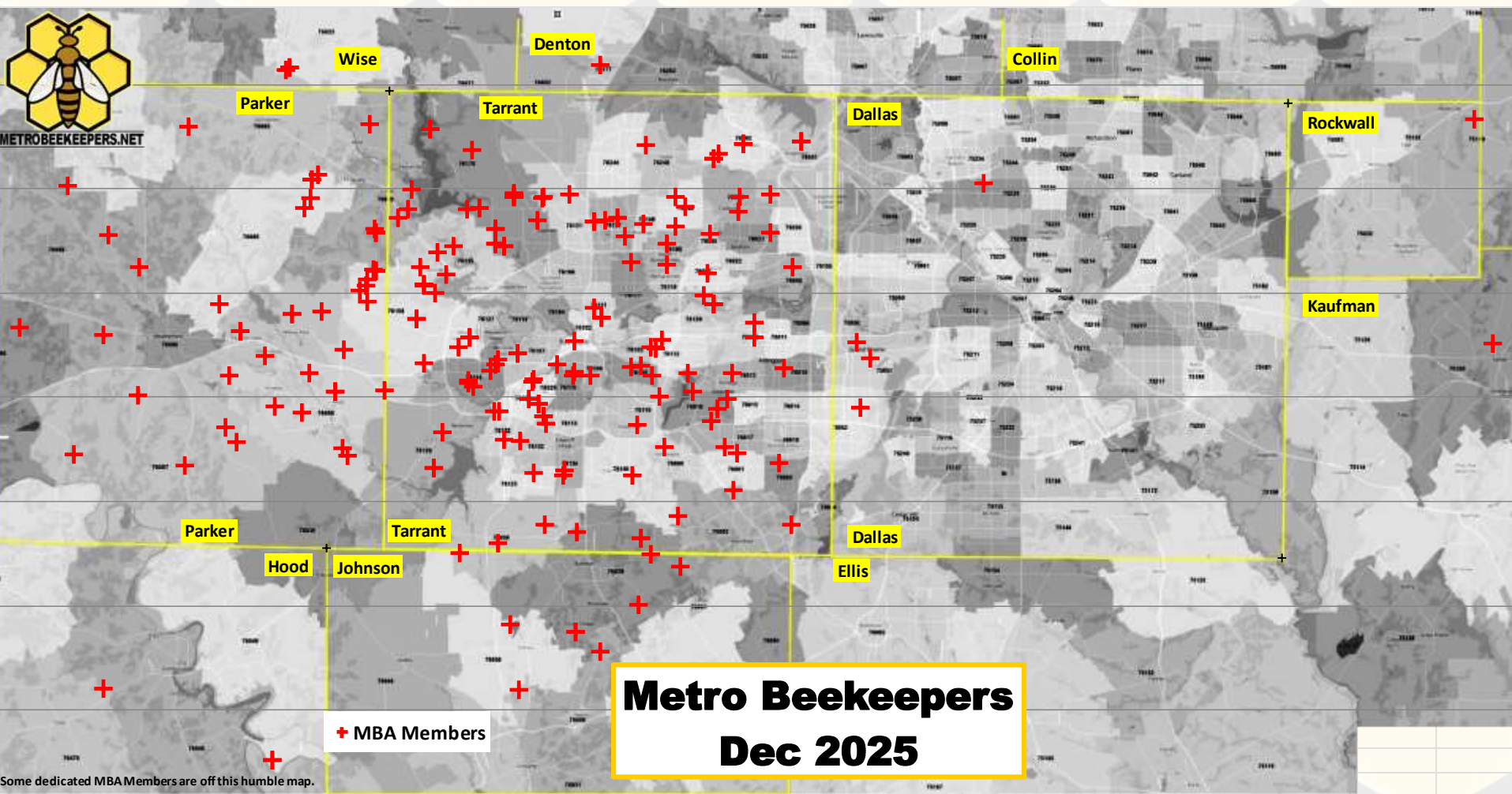
12 April, Charles



10 May, Gary

Membership

- **211 MBA Member households across 9 counties**
- **Members can opt-in to share email & zip code, to help coordinate visits to bee yards, share equipment, etc**



Web/Social Media

- **Keith Miller, Webmaster**
- **MBA Web Pages**
 - **Join/Renew, Class, Youth Scholarships, Bee Removal, Extractor**
 - **Resources, FAQs, Past programs**
- **Facebook**
 - **MBA Announcements**
 - **Members share ideas, info, buy/sell, etc.**
 - **Facebook Group, 1800 members**
- **New logo approved in 2025**

Financial Report

Beginning Balance	\$ 21,283
Ending Balance	\$ 19,755
Income for year	\$ 9,777
Expense for year	\$ 11,307
Income - Expense	\$ (1,530)

Income by Category	Amount
Class	\$ 5,743
Member dues	\$ 3,962
Auction	\$ -
Gifts	\$ 72
Total Income	\$ 9,777

Expense by Category	Amount
Venue	\$ 3,685
Scholarships	\$ 1,893
Speaker	\$ 600
Insurance	\$ 1,496
Class	\$ 460
Website	\$ 115
Postage	\$ 222
PayPal	\$ 150
Lawyer	\$ 100
Equipment	\$ -
Membership	\$ -
Zoom	\$ 196
TBA Texas Beeks	\$ 50
Misc	\$ 460
Prizes	\$ 1,880
Total Expenses	\$ 11,307

- **Calendar year ending 31 Dec 2025**
- **Report submitted by Crystal Whittlesey, 2025 MBA Treasurer**
- **MBA uses Cash Method of accounting**
 - **Transactions are booked in the month money is received or paid**
- **Scholarships**
 - **Amount shown includes cost of bees (nucs) & partial cost of equipment, suits & tools**
 - **Thanks to The Bee Supply for providing a discount toward equipment, suits, & tools**
- **Many speakers volunteered with no payment**
- **At least 2 MBA Directors have reviewed financial records & confirm that all accounts, expenses, & income are reconciled, & are consistent with authorizations by the MBA Board of Directors. MBA budget & holdings are too small to require an external audit.**

2025 Board of Directors

Thanks to the volunteers!



Russ Killingsworth
President

open
Vice President



Charles Seargeant
Secretary



Crystal Whittlesey
Treasurer



Katrina Semones
Membership



Barbara Boardman
Programs



Keith Miller
*Webmaster /
Social Media*



Gary Dilling
*Youth
Coordinator*

2025 Business Meeting



- **Business meeting held 10 Nov 2025, as part of regular monthly mtg**
- **Thanked 2025 Board & class teacher**

- **2026 Board was approved**
 - **Voting by written ballot**
- **No other resolutions**
- **Business meeting closed**

2026 Directors	Name
President	Leggett, Terry
Vice President	Sherwood, Crystal
Vice President	Kissentaner-Thomas, LaGina
Secretary	Bakintas, Konstantine
Treasurer	Whittlesey, Crystal
Programs	Morrow, Robert
Youth Coord	Dilling, Gary
Web/Social	Miller, Keith
Membership	Semones, Katrina

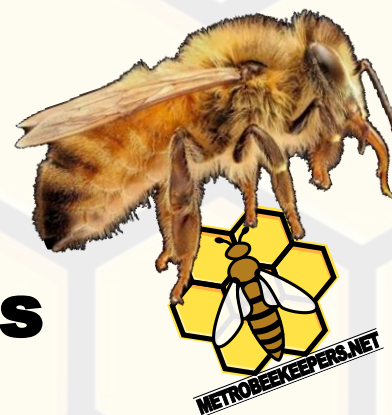
MBA History

- **[Metro Beekeepers Association](#)** started as a small group in 1980 in Burleson TX, meeting in restaurants, businesses, & churches. Members & guest experts shared challenges, ideas, & successes in small scale beekeeping.
- Later, we started a beekeeping class & youth scholarships to introduce teens to beekeeping
- Over time, attendance grew & spread, prompting the move in 2014 to Fort Worth Southside Preservation Hall, then in March 2024 to **[Fort Worth Botanic Garden](#)**
- About 80 people attend **[MBA monthly meetings](#)** in-person, which are free and open to the public
- The **[beekeeping class](#)** (for paid students) is highly rated (4.7 out of 5) & includes field trip opportunities
- MBA provides free **[Resources](#)** to the public, incl **[FAQs](#)**
- **[Youth Scholarship](#)** applications are due by October 1st for the following year
- We invite comments & suggestions **[Contact Us](#)** or **[Facebook](#)**

[METROBEEKEEPERS.NET](#)

The Future

- **MBA continues dedication to our missions**
 - **Share the importance of bees**
 - **Share methods of beekeeping & honey production**
 - **Promote beekeeping in the Fort Worth area**
 - **Attract and train future beekeepers**
- **2026 Plans**
 - **Awarded 2 new Youth Scholarships**
 - **Planning monthly programs**
 - **Beginner classes**
 - **Web / Social Media resources**
- **We'd love to hear your suggestions**



**MBA Relies on Member Support
Thank You!**